

**Welcome to Castle
Bay Karatsu 420 Worlds**

2015



Venue and Organising Authorities

Address	Saga Pref. Yacht Harbor 3-1-8 Futago, Karatsu-City, Saga Pref. Japan
phone	+81 955 73 7041
Fax	+81 955 73 8986
E-mail	info420@karatsu-worlds.com
Website	http://2015-420-castlebay.karatsu-worlds.com/

The event will be organized by The Executive Committee of Castle Bay Karatsu Yacht World Championships in conjunction with the Japan 420 Class Association under the auspices of the Japan Sailing Federation.



Weather Conditions

Wind

There are predominantly N and NE sea breezes with the range of 8 to 18 knots in afternoons in July and August. If the prevailing wind continues for more than 2 days, there are chances to get bigger waves up to 2.5 meters.

Temperature

Average temperature 27 to 31°C

Average water temperature 27 to 29°C

Current

Max. 0.5knots

Tide

High / Low Difference : 0.8 to 2.2m



Proposed Dates

The organising committee preposes following schedules:

Day1	17 th Jul. (Fri)	Registration and equipment inspections
Day2	18 th Jul. (Sat)	Registration and equipment inspections
Day3	19 th Jul. (Sun)	Registration and equipment inspections Practice Race Opening Ceremony with Castle-Bay Fire Works Show
Day4	20 th Jul. (Mon)	Qualifying series
Day5	21 st Jul. (Tue)	Qualifying series
Day6	22 nd Jul. (Wed)	Qualifying series
Day7	23 rd Jul. (Thu)	Qualifying/Final series
Day8	24 th Jul. (Fri)	Qualifying/Final series
Day9	25 th Jul. (Sat)	Qualifying/Final series Prize Giving and Closing Ceremony with Traditional Town Summer Saturday Night Festival



Welcome Party



Kimono Event



Welcome Events

During Laser Radial World Championships in 2009

Cafe



Party



Accommodation

The club house is located very close to Karatsu city center. (5 minutes by car)

Karatsu City one of the well-known tourist site in southern Japan with its own tradition and history, so there are many hotels and Japanese-styled hotel, known as Ryokan.

Information about accommodation in Karatsu can be found on the following web sites: Karatsu-City Ryokan Association

<http://www.karatsu-yado.com/english/event.html>

Transport

To Saga Pref. Yacht Harbor (Karatsu City)

Karatsu City is located approx. 50km southwest of Fukuoka International/Domestic Airport.

Fukuoka Airport is linked with other main international airports in Japan such as Tokyo (Narita or Haneda), Osaka, Nagoya, etc.

Public trains and buses from the airport are also available to Karatsu City Centre.

The nearest port is located also in Fukuoka (Hakata Port) which takes about an hour by car.



Transportation Access



Map : Karatsu City Ryokan Association Web site



Map : Karatsu Tourist Association Web site

Information about transport can be found on the following web:
<http://www.karatsu-yado.com/english/access.html>



Charter Boats

Nautivela will support to provide the charter boats for this event. All competitors from overseas will be able to charter a new Nautivela's 420. Organising committee will also be able to provide charter coach boats (Rib or hard boat) at a reasonable price. You can't bring coach boat for Japanese Rule.

420boat Price: New boat:???

Used Nautivela boat(20boat):500EURO(Per Event)

Coach Boat Price:35EURO to 160EURO(Per day)

Rental Bicycle

100 bicycles prepare from organizer

(free of charge, insurance cost about 10 EURO)



Shore Based Details

The Club House and Hangers



Boat Park



Shaded Area for Competitors



Shore Based Details

Gentle Slope(90m wide)



Coach Boat Floating Pontoons



Car Park(200m from the club house)



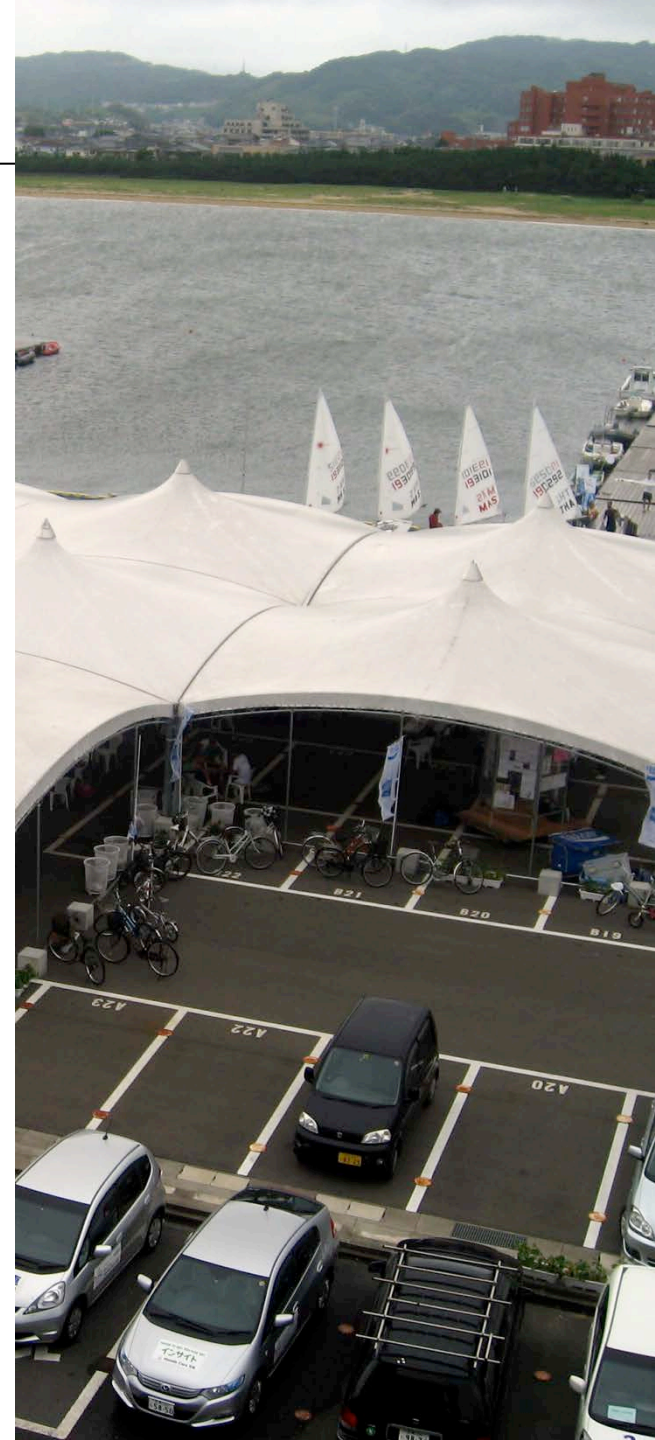
Site Layout

The Club House at the Saga Pref. Yacht Harbor has available rooms for:

- Race Committee
- Briefing
- Scoring
- Jury Room (a room is divided into two with a panel)
- Press
- International Class Association

A large tent area will be used for sail measurement prior to the race, and then will be turned in to competitor's area with food and drink service.

The Hangers will be used for hull measurement.



Site Layout

Boat Park

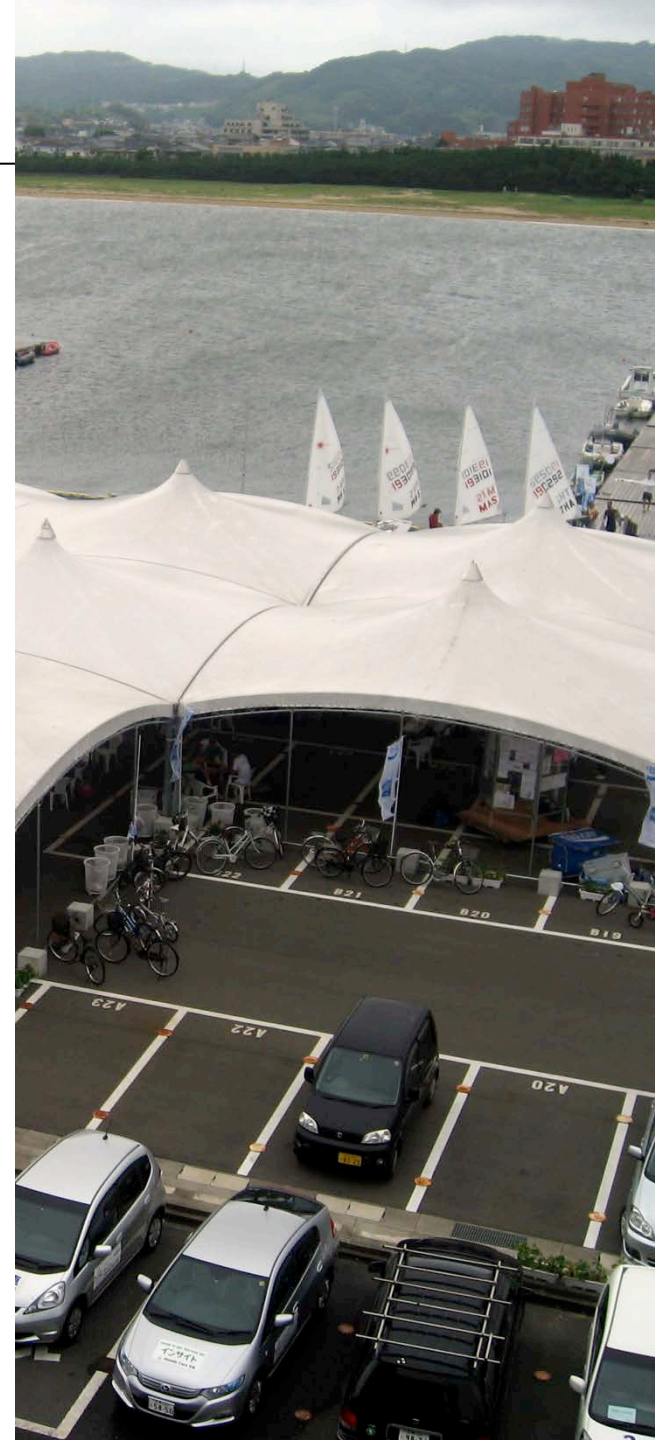
Saga Pref. Yacht Harbour has 350 slots for dinghies and pontoons for 30 keel boats.

Launching Area

Very wide launching slope is available just in front of the boat park (approx. 90m wide, 360 square meter)

Competitors' Area

Large tents will be provided for competitors (approx. 800 square meter). There will be catering services available with food that enables to charge and recharge competitors' energy quickly, such as pasta, salads, soups, etc. at reasonable price. The competitors' area is very conveniently located closed to launching slope and boat parks.



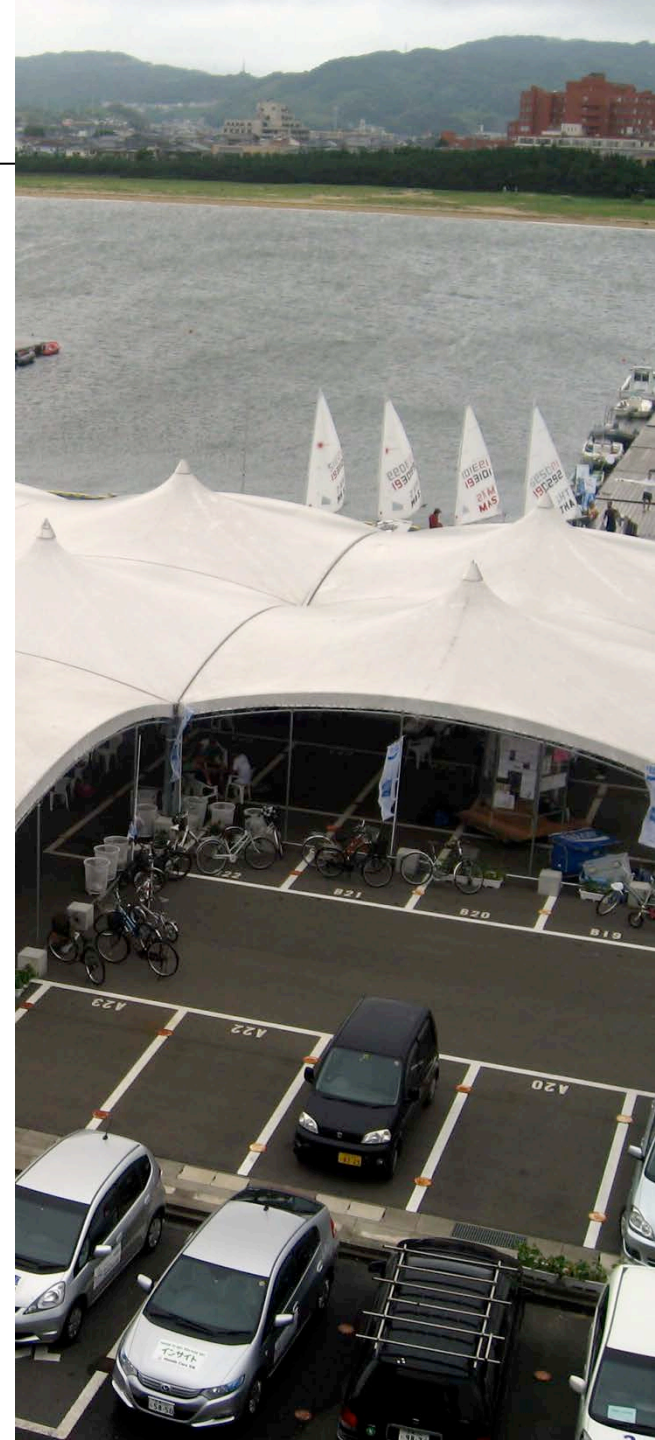
Site Layout

Toilet and Showering Facilities

There are toilet and showering facilities in the harbour. All these facilities are divided in female and male. Hot water is available and all facilities will be cleaned up every day.

Internet Access

Free Wi-Fi Access is available for everyone in the harbor (approx. 500 users are able to use the service, inside and outside the Club House)
There shall be separate password for the service for all the officials.



Water Based Details

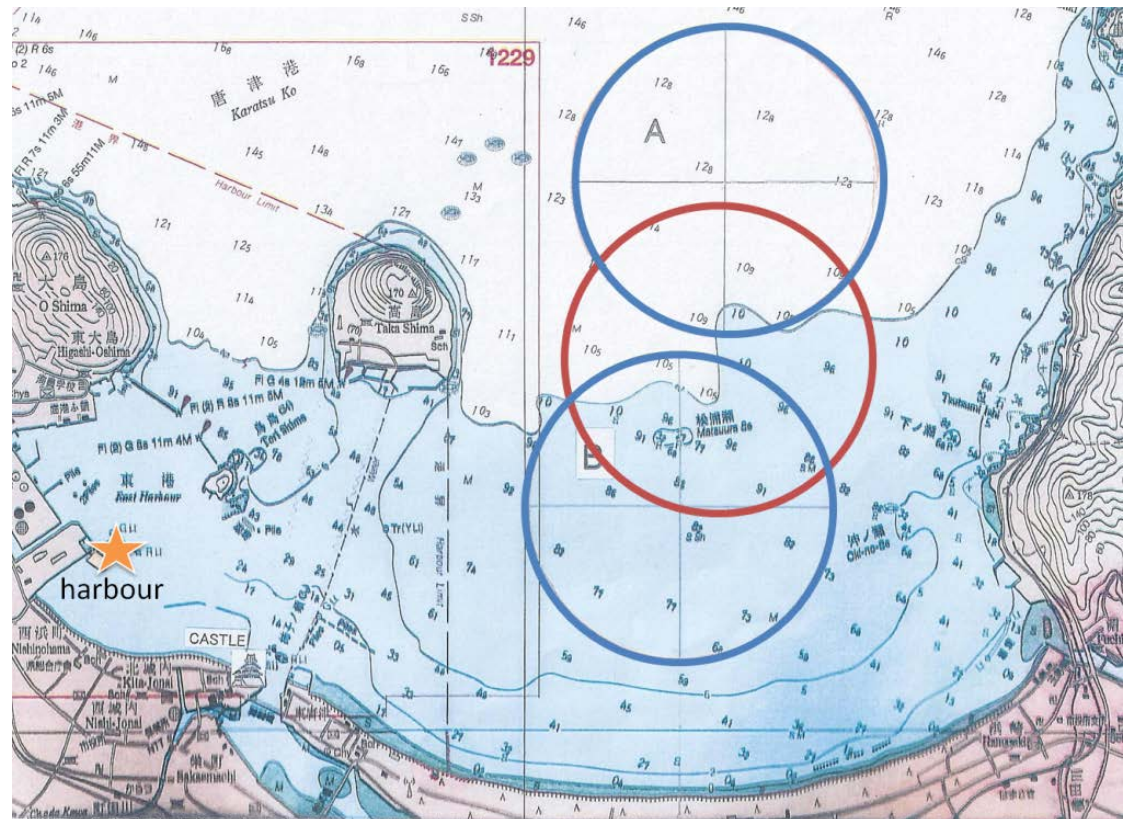
The Yacht Harbour is located at N33.4605, E129.967747.

There are two patterns for racing areas:

Single race shall be held at the area marked with red on the map above. The centre of the red circle is N33.4752, E130.013. When two races are held at the same time, it will be held separately as marked with blue on the map.

Race Committees Boats

We are able to offer 14 boats
(5.4m ~ 14m) per course area.
More than 20 charter coach
boat will also be available.



Things to do

In your free time you can also enjoy:

- Japanese Traditional Castle
(Karatsu Castle)
- Traditional potteries
- Traditional historic town
- Very delicious Japanese food, such as fresh seafood (both Sushi and Sashimi), high quality beef and Japanese Sake
- Day-trip to varieties of nice natural hot spas and semi-active volcanos

You can also find more attractions at the following website:

<http://www.karatsu-kankou.jp/english.html>



420 Training for the Worlds

- 25/26 December 2014 Clinic
- 27~29th December 2014 All Japan championship
- 2~5th April 2015 Clinic from Int.420 class Ass.(plan)
- 3~6th May 2015 All Japan youth championship



Karatsu Castle

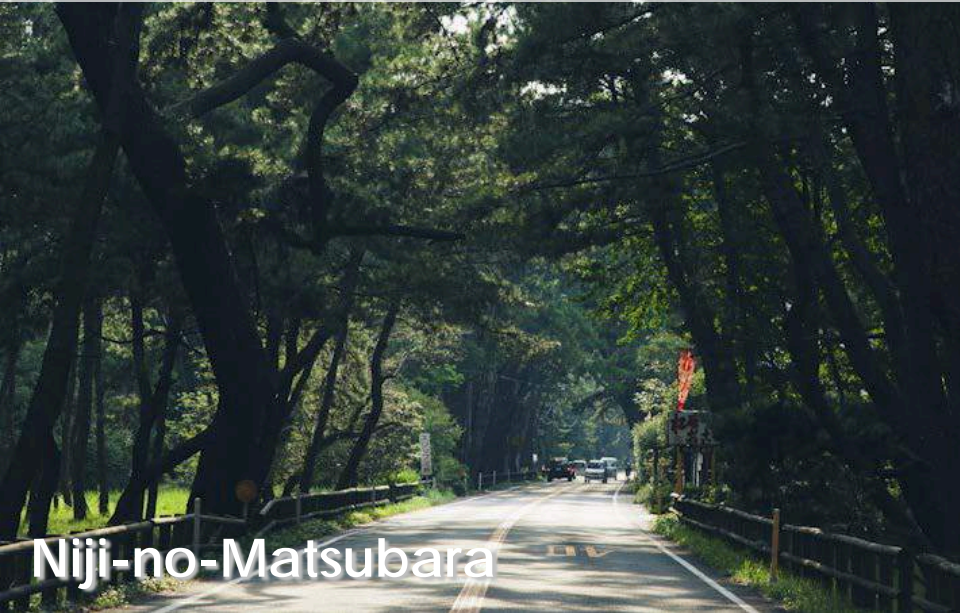


Nishinohama Beach



Castle-bay Karatsu

day-trip to many nice natural hot spas and semi-active volcanos



Niji-no-Matsubara



Karatsu Pottery



Fresh Seafoods



Karatsu Kunchi Festival

Castle-bay Karatsu

day-trip to many nice natural hot spas and semi-active volcanos



Castlebay Fireworks Show



Saturday Night Festival



The Executive Committee of Castle Bay Karatsu
Yacht World Championships
Japan sailing Federation
Japan 420 class Association
Saga Pref. Sailing Federation

