



## International 420 Class Australian Championships

### Notice Of Race

Organising Authority  
Woollahra Sailing Club  
In conjunction with the  
New South Wales International 420 Association



## **NOTICE OF RACE**

### **1 RULES**

1.1 The regatta will be governed by the rules as defined in The Racing Rules of Sailing 2013-2016 (RRS) and the Yachting Australia Special Regulations Part 2.

1.2 The Constitution and By-Laws of the Australian International 420 Class shall apply. The Organising Authority has applied to Yachting Australia for the appointment of a National Jury for the International 420 Class Australian Championship in accordance with Yachting Australia Addendum A. The decision of the National Jury will be final and not subject to appeal, as provided in RRS 70.5.

1.3 Appendix P will apply and may be changed by the Sailing Instructions.

### **2 ADVERTISING**

2.1 Boats may be required to display advertising chosen and supplied by the organising authority.

2.2 The Organising Authority reserves the right to refuse advertising by a boat or competitor.

### **3 ELIGIBILITY AND ENTRY**

3.1 The regatta is open to all eligible International 420 Class boats.

3.2 All Australian competitors shall be current members of their State or National 420 Association and current members of a club affiliated with a Member Yachting Association and a Yachting Australia card holder.

3.3 International competitors shall be members of a club affiliated to an ISAF recognized Member National Authority (MNA)

3.4 Only Australian citizens are eligible to be declared the Australian Champion, the Australian Female Champion and the Australian Youth Male and Female Champions.

3.5 Evidence of age for 'Youth' competitors shall be presented at registration.

3.6 The crew of boats entered in the 'Female' category shall both be female and shall display a red rhombus on their mainsail in compliance with Class Rule C10.3.1(c).

3.7 Eligible boats may enter electronically on the event website or by emailing or posting the entry form attached.

3.8 Late entries may be accepted after the 9th December 2015 until 1700 hours on 27<sup>th</sup> December 2015 and will consequently attract a late entry fee of AUD\$100.00

3.9 Additional tickets for the Welcome function and Presentation can be purchased online through the event website.

## 4 FEES

4.1 Required fees are in Australian dollars as follows:

- (a) Entry Fee: AUD \$420.00 per boat includes competitors entry to Welcome Function and Presentation Dinner.
- (b) Late Entry: AUD \$520.00 applies for entries received after 4<sup>th</sup> December and includes competitors entry to Welcome Function and Presentation Dinner.

## 5 SCHEDULE

5.1

Friday 1 <sup>st</sup> January 2016	Registration and Measurement	0900 - 1500
	Volunteers Briefing	1600
Saturday 2 <sup>nd</sup> January 2016	Registration and Measurement	0900 - 1100
	Competitors Meeting	1130
	Invitation Race	1300
	Competitors Welcome Function	1730
Sunday 3 <sup>rd</sup> January 2016	RaceDay	Per Sailing Instructions
Monday 4 <sup>th</sup> January 2016	RaceDay	Per Sailing Instructions
Tuesday 5 <sup>th</sup> January 2016	Lay Day	Per Sailing Instructions
Wednesday 6 <sup>th</sup> January 2016	RaceDay	Per Sailing Instructions
Thursday 7 <sup>th</sup> January 2016	RaceDay	Per Sailing Instructions
Friday 8 <sup>th</sup> January 2016	RaceDay	Per Sailing Instructions
	Presentation	1730

5.2 No warning signal shall be made after 1500 hours on 3rd January 2015.

5.3 The regatta will consist of a maximum of 12 races.

5.4 No more than 3 races will be sailed on any one day.

## 6 MEASUREMENT

5.1 Each boat shall produce a valid measurement certificate. Only the original or a certified copy of the measurement certificate will be accepted.

5.2 In addition the following checks will be made to confirm compliance with the Class Rules:

- A.** Sails will be inspected for a measurement stamp and an authorized measurer's certification mark. No facilities will be available at the regatta for measurement and/or certification.
- B.** Boats will be weighed and checked to ensure that any correctors listed on the measurement certificate are installed.
- C.** Spars will be checked for dimensions and sail track end stops.
- D.** Other checks may be made at the discretion of the Organising Authority.

## **7 SAILING INSTRUCTIONS**

Sailing Instructions will be available from 1400 hours on 28th December 2015 at the registration desk at the regatta venue, Woollahra Sailing Club. However, they may be posted earlier on the regatta website: [www.woollahrasailingclub.org.au](http://www.woollahrasailingclub.org.au)

## **8 REGATTA VENUE**

Woollahra Sailing Club, 2 Vickery Avenue. Rose Bay NSW- Attachment 1 shows the location of the regatta site and Attachment 2 the approximate location of the racing area.

## **9 THE COURSES**

The courses to be sailed shall be those described in the Sailing Instructions.

## **10 SCORING**

10.1 Four (4) races are required to be completed to constitute a series.

10.2 When fewer than six (6) races have been completed, a boat's series score will be the total of her race scores.

10.3 When six (6) to eight (8) races have been completed, a boat's series score will be the total of her race scores excluding her worst score.

10.4 When nine (9) or more races have been completed, a boat's series score will be the total of her race scores excluding her two (2) worst scores.

## **11 SAFETY**

11.1 All competitors shall wear personal flotation devices when afloat which are in good condition and are in accordance with the specifications issued or approved by a National Authority or Standards Organization and branded in the country of origin or manufacture.

11.2 Attention is drawn to RRS 1.2 and RRS 4.

11.3 Discretionary Penalties may apply to RRS 41, Outside Help. Actions of the Race Committee boats in retrieving crews from the water and returning them to their boats may not be penalized.

## **12 NATIONAL TEAM SELECTION**

12.1 The results of this regatta will form part of the selection criteria for the Australian Team to compete in the 420 Class events that involve a restricted entry for the year 2016 (including the 2016 International 420 World Championships and 2016 ISAF Youth World Championships). Results from International Events coinciding with this regatta may also be considered in the selection criteria.

12.2 The Australian team will be selected according to the process set out in the Australian 420 Association Constitution and Bylaws.

## **13 SUPPORT BOATS**

13.1 Team Managers, Coaches and other support personnel shall register by completing an online registration form available on the event website.

13.2 Approved Support Boats shall keep at least 100m clear of the course area during racing, except when asked to assist by an official from the race committee.

13.3 All Support boats shall be marked with a numbered flag available at registration upon the completion of the Support Boat online registration form.

13.4 Support boats shall hold a current Power Boat Licence at the time of the event and have the applicable Safety Gear and VHF Radio on board their vessel and are required to wear an appropriate PFD at all times while afloat.

13.5 Support personnel and boats shall make themselves available at all times while afloat to assist the race committee in the case of an emergency or rescue, as directed in person by a race officer or via VHF Radio

#### **14 RADIO COMMUNICATION**

While on the water, a boat shall not carry equipment capable of making radio transmissions or receiving radio transmissions except for equipment provided by the Organising Authority. This restriction also applies to mobile telephones.

#### **15 ADDITIONAL EQUIPMENT**

Boats may be required to carry sound equipment or positioning equipment as specified by the Organizing Authority. Failure of any supplied equipment will not be grounds for redress.

#### **16 PRIZES**

16.1 Prizes will be awarded to the following:

Australian 420 Champion	Australian Open Champion Sardine Trophy
Australian 420 Champion Female	Champion Female Trophy
Male Australian Youth Champion	Huck Scott Perpetual Trophy
Female Australian Youth Champion	Australian Youth Female Champion Trophy
Visitors Trophy (Overseas Competitors)	1 <sup>st</sup> Placed Boat Helmed by a Non Australian Resident
Open Championship Competitors	1 <sup>st</sup> to 5 <sup>th</sup> Placed Boats
Female Championship Competitors	1 <sup>st</sup> to 5 <sup>th</sup> Placed Boats
Mixed Championship Competitors	1 <sup>st</sup> to 3 <sup>rd</sup> Placed Boats
Junior Championship Competiros	1 <sup>st</sup> to 3 <sup>rd</sup> Placed Boats Aged Under 17 on 31 December 2016
Invitation Race	1 <sup>st</sup> Placed Boat
Overall Handicap Champions	1 <sup>st</sup> to 5 <sup>th</sup> Placed Boats on Handicap
Consistency Award	Don Woolman Trophy
Champion Australian State/Territory	Peter Loft Trophy

16.2 Additional trophies may be awarded at the discretion of the Organising Authority. All trophies will be awarded to helm and crew in accordance with Class By-Laws. Any competitor, who wins a prize in the open or female fleets, will be ineligible to receive a handicap prize.

#### **17 DISCLAIMER OF LIABILITY**

17.1 It is the competitor's decision to enter an Event or to start and continue in any race. Competitors shall accept that their participation in an Event is at their exclusive risk in every respect. See Racing Rule 4, Decision to Race.

17.2 None of the Organising Authority, Australian International 420 Class, Western Australian International 420 Class Association their officers, members, volunteers, servants or agents accept any responsibility whatsoever in respect of loss of life, personal injury or damage to property which may be sustained by reason of their participation or intended participation in this event or howsoever arising in connection with the event.

## **18 MEDIARIGHTS&RESTRICTIONS**

18.1 Each entrant for the Regatta consents to the Organising Authority distributing information to the entrant and crew regarding, racing, marketing and associated event information including social events. This information may be distributed by email, web, mail, fax, mobile phone messaging and telephone.

18.2 Conditions of entry include a requirement that the owner or charterer of the boat and crew:

- (a) Acknowledge that the Organising Authority owns all media rights to this Regatta and may exercise those rights as it sees fit.
- (b) In submitting the entry form, all competitors, parents, legal guardians/custodians provide their permission for all photographs to be the property of the organisers and used for any purpose including public viewing and posting on the event website.

## **19 INSURANCE**

19.1 All boats competing in the International 420 Class Australian Championships 2016 shall have current for the duration of the Event third party insurance cover of not less than AUS\$5,000,000 (recommended AUS\$10,000,000) or equivalent in any other currency.

19.2 All competitors who submit the Entry Form are deemed to have made a declaration that they hold such cover.

19.3 Competitors may be required to provide details and evidence that they have such insurance in place at the time of entry.

## **20 NOTICESANDAMENDMENTS**

Any Amendments & Notices will to be posted on the Event web site and the official event notice board located at Woollahra Sailing Club.

## **21 FURTHER INFORMATION NOT FORMING PART OF THE NOTICE OF RACE**

For further information please contact:

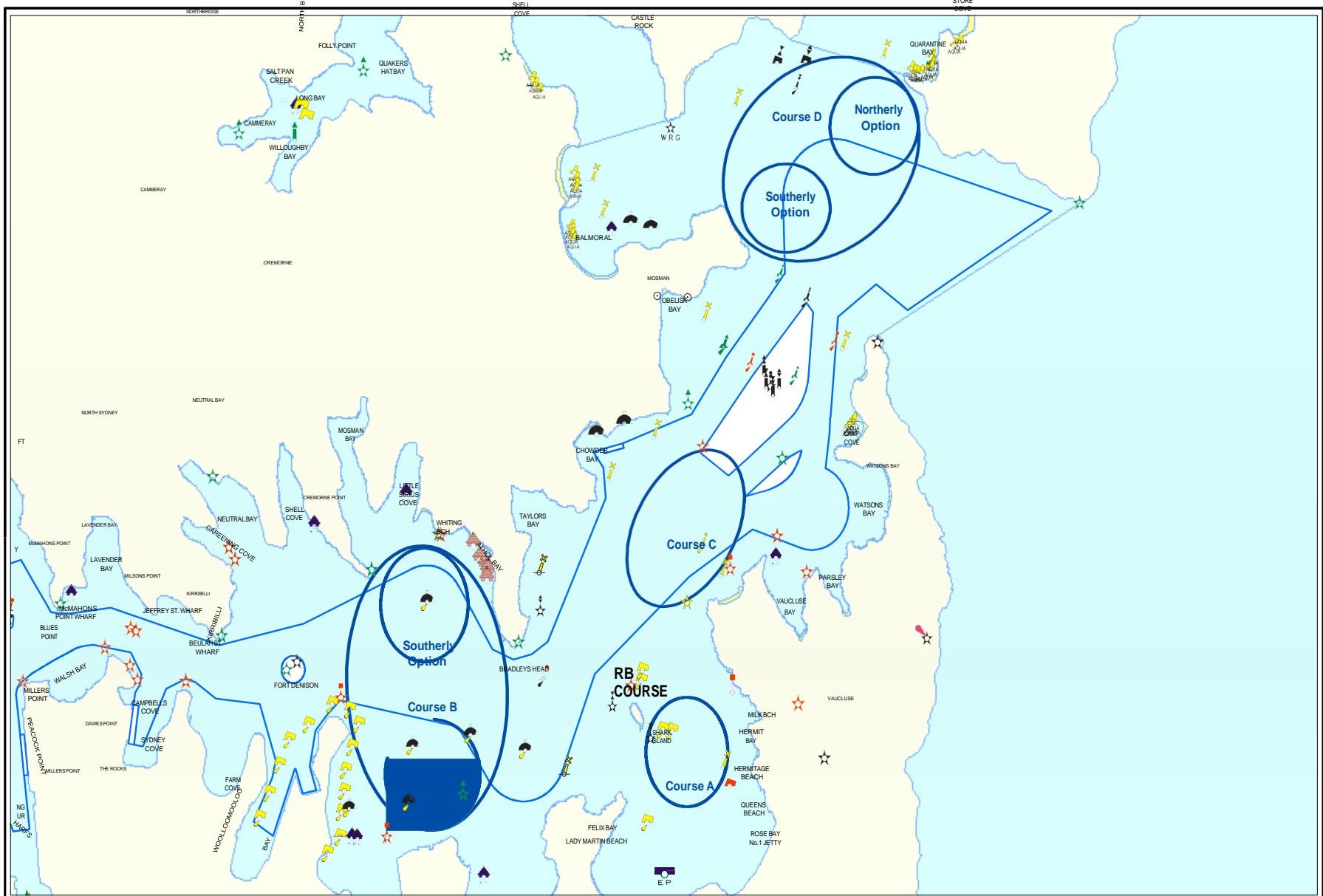
Woollahra Sailing Club  
2 Vickery Ave  
Rose Bay NSW 2029  
02 9371 9805

[sail@woollahrasailingclub.org.au](mailto:sail@woollahrasailingclub.org.au)

Attachment 1- Site Plan



# Attachment 2 – Course Area





## GENERAL DETAILS - Class

## Entry Form

Skipper Name		Date of Birth	
Full Address inc. Post Code			
Country & State		Mobile Phone	
Email		ISAF #	
Full Name of Yacht		YA# AUS sailors only	
Crew Name		Date of Birth	
Full Name of Yacht		YA# AUS sailors only	
Emergency Contact Person		Contact Number	

**Declaration:**

Competitors participate in the regatta entirely at their own risk. See rule 4, Decision to Race. The organising authority will not accept any liability for material damage or personal injury or death sustained in conjunction with or prior to, during, or after the regatta. Competitors confirm that there is a valid and current certificate of insurance in accordance with paragraph 22 of this Notice of Race.

I hereby agree to the terms and conditions.

Signature Skipper		Date	
----------------------	--	------	--

**Entrants Under 18 Years – Parent/Guardian Declaration:**

As parent/guardian of the above named entrant I agree to his/her participation in this event on the terms and conditions as outlined in the Notice of Race and similarly indemnify all parties involved in the organisation and conduct of the event.

I hereby agree to the terms and conditions.

Signature Parent/Guardian		Date	
------------------------------	--	------	--

**PAYMENT DETAILS**

- Cheque (payable to Woollahra Sailing Club)  
 Direct Transfer  
 Account Name: Woollahra Sailing Club  
 BSB: 062-267 | Account: 10161441  
*Please quote your SAIL NUMBER and Class as the reference*

- Credit Card  
 VISA | MASTERCARD (please circle your selected card)

Name on Card..... Card

Number.....

Expiry..... Signature.....

Entry Fee (AUD)	\$420.00	Full payment must be received prior to entry being accepted. Entry fees includes the competitors entry to the Welcome and Presentation Functions.
Late Entry Fee (AUD)	\$520.00	

**Please forward completed entry form to:** Woollahra Sailing Club-@ Vickery Avenue,  
 Rose Bay, NSW. 2029 or [sail@woollahrasailingclub.org.au](mailto:sail@woollahrasailingclub.org.au)  
 or enter online at [www.woollahrasailingclub.org.au](http://www.woollahrasailingclub.org.au)