



## **SINGAPORE NATIONAL YOUTH CHAMPIONSHIP**

13th – 17th March 2012

National Sailing Centre

Organising Authority: Singapore Sailing Federation

### **NOTICE OF RACE**

#### **1 RULES**

- 1.1 The regatta will be governed by the rules as defined in *The Racing Rules of Sailing*.
- 1.2 No national prescriptions will apply.

#### **2 ADVERTISING**

Advertising will be restricted to Category C.

#### **3 ELIGIBILITY AND ENTRY**

- 3.1 The regatta is open to all boats of the following classes:

- Optimist
- Laser Standard
- Laser Radial
- Laser 4.7
- Byte
- Bic Techno
- RS:X, Raceboard/IMCO
- 420

Sailors must be members of a club affiliated to SingaporeSailing or in the case of international entrants, are members of a club affiliated to their own national authority.

- 3.2 All competitors shall be under the age of 19 years on 31 Dec 2012 (born on after 1<sup>st</sup> January 1994).
- 3.3 Singaporean 420 competitors are encouraged to have at least SingaporeSailing Level 2 Proficiency certification. All other Singaporean competitors in the other classes must have at least SingaporeSailing Level 1 Proficiency certification or its equivalent.

- 3.4 Proof of club membership is required upon submission of entry form. Sailors without valid club membership shall not be eligible to participate in this regatta.
- 3.5 Eligible boats may enter by completing the attached form and sending it, together with the required fee, to:

Singapore Sailing Federation      Tel:      +65 6444 4555  
 1500 East Coast Parkway      Website:      www.sailing.org.sg  
 National Sailing Centre  
 Singapore 468963

by the closing date **04 March 2012**, 1700hrs.

- 3.6 A minimum of 6 entries in each class is required to form an event.
- 3.7 If the minimum number of entries is not received for any particular class, the decision to allow the class to sail will be at the discretion of the Organising Authority.

#### 4 FEES

Entry fees (inclusive of GST) are as follows:

<u>Classes</u>	<u>Early bird before 29 Feb</u>	<u>By 29 Feb</u>
Single handed class	\$74.90	\$112.35
Double handed class	\$149.48	\$224.70 (per boat)

There will be no refund of regatta entry fees. Refund will only be given if the regatta is cancelled.

#### 5 FORMAT OF RACING

- 5.1 Optimist Sailors listed in the SingaporeSailing Optimist Gold Fleet ranking list (as of Feb 2012) shall sail as one fleet for the entire event, all other sailors in the national ranking shall sail in Silver Fleet for the entire event. International entrants who do not appear on the national ranking will be allocated to either the Gold or Silver Fleet at the organizing authority's sole discretion based upon their own national ranking and history of results.
- 5.2 If the number of entries received for the Optimist Silver Fleet and Byte class at the close of entries is more than 90, the regatta **may** race using Fleet Grouping format. If the number of entries is more than 100, the regatta **shall** race using Fleet Grouping in the following format:
- 5.3 The entire fleet will be divided into 4 groups: White, Yellow, Pink, and Brown. When more than 4 groups are required, appropriate measures will be taken. The seeding of boats into the 4 groups will be based on the current National Ranking where available or another method as determined by the Organising Authority. The seeding will be done as soon as possible after the closing of entries and shall not be subject to protest. This changes rule 60.1(b).
- 5.4 Each race shall consist of 2 groups racing together and where possible each group shall race each other group an equal number of times.
- 5.5 Groups may be started in any order however the Race Committee will attempt to start as follows:

<b>Race No.</b>	<b>Groups</b>	<b>Race No.</b>	<b>Groups</b>
Race 1A	1 & 2	Race 1B	3 & 4
Race 2A	2 & 4	Race 2B	1 & 3
Race 3A	1 & 4	Race 3B	2 & 3
Race 4A	3 & 4	Race 4B	1 & 2
Race 5A	1 & 3	Race 5B	2 & 4
Race 6A	2 & 3	Race 6B	1 & 4
Race 7A	1 & 2	Race 7B	3 & 4
Race 8A	2 & 4	Race 8B	1 & 3
Race 9A	1 & 4	Race 9B	2 & 3
Race 10A	3 & 4	Race 10B	1 & 2
Race 11A	1 & 3	Race 11B	2 & 4
Race 12A	2 & 3	Race 12B	1 & 4
Race 13A	1 & 2	Race 13B	3 & 4
Race 14A	2 & 4	Race 14B	1 & 3
Race 15A	1 & 4	Race 15B	2 & 3

5.6 The Group Flags shall be displayed in place of Class Flags. All boats will display a coloured ribbon (corresponding with the colour of their groups) attached securely to the top of their mast or sprit. The organiser will provide these ribbons.

5.7 The group flags and colours are:

Group 1 – White

Group 2 – Brown

Group 3 – Yellow

Group 4 – Pink

5.8 When more than 4 groups are required, appropriate measures will be taken.

## **6 SCHEDULE OF RACES**

6.1 Racing is from 13<sup>th</sup> – 17<sup>th</sup> March 2012.

6.2 The scheduled time of the warning signal for the first race each day is 1100hrs.

6.3 There will be no limit to the number of races that may be sailed per day.

6.4 On the last day of the regatta no warning signal will be made after 1600hrs.

## **7 SAILING INSTRUCTIONS**

The sailing instructions will be available after **04 March 2012** at the National Sailing Centre, Singapore.

## **8 VENUE**

Attachment 1 shows the location of the racing areas.

## **9 THE COURSES**

9.1 Optimist class course will be an outer-loop trapezoid with the finish line at the end of the second windward leg.

- 9.2 Other classes course will be Windward / Leeward or Trapezoid with optional finishing legs.
- 9.3 The diagram in Attachment 2 shows the course, the course designations, the approximate angles between legs, the order in which marks are to be passed, and the side on which each mark is to be left.

## **10 PENALTY SYSTEM**

- 10.1 Appendix P will apply as changed by instructions 10.2 and 10.3.
- 10.2 On the first protest, if a boat is protested after she has finished, she will be given a scoring penalty of 6 points, without a hearing. If her score results in a score worse than DSQ, the penalty will be corresponding to DSQ.
- 10.3 Rule P2.3 will not apply and rule P2.2 is changed so that it will apply to any protest after the first one.
- 10.4 Appendix P will not apply to Windsurfing class.
- 10.5 Action taken under Appendix P will not be grounds for redress by a competitor.

## **11 SCORING**

- 11.1 The Low Point Scoring System of Appendix A will apply.
- 11.2 A maximum of 15 races are scheduled. A minimum number of 5 races is required to constitute a series.
- 11.3 When fewer than 7 races have been completed, a boat's series score will be the total of her race scores.
- 11.4 When 7 to 11 races have been completed, a boat's series score will be the total of her scores excluding her worst score.
- 11.5 When 12 or more races have been completed, a boat's series score will be the total of her scores excluding her two worst scores.
- 11.6 Where a class is racing in groups;  
(a) a race will be defined as one complete series of 2 starts and finishes of all 4 groups.  
(b) each race of two groups will be scored as one race. Only races that have been completed for all 4 groups will count.

## **12 SUPPORT BOATS**

Support boats shall be identified by a white flag with the letter corresponding to the course area.

## **13 BOAT CHARTER**

A limited number of sailing boats and coach boats will be available. These boats will be issued on first come first served basis. Please note that the chartered boats will only reserve when we receive the form. Please see Attachment 3 for boat charter details.

## 14 RADIO COMMUNICATION

Except in an emergency, a boat shall neither make radio transmissions while racing nor receive radio communications not available to all boats. This restriction also applies to mobile telephones.

## 15 PRIZES

Prizes will be given as follows:

### Optimist

Gold Fleet Open Division	1 <sup>st</sup> to 10 <sup>th</sup>
Silver Fleet Open Division	1 <sup>st</sup> to 3 <sup>rd</sup>
• Silver Fleet (13 – 15 yrs old)	1 <sup>st</sup> to 3 <sup>rd</sup>
• Silver Fleet (11 – 12 yrs old)	1 <sup>st</sup> to 3 <sup>rd</sup>
• Silver Fleet (10 yrs old and under)	1 <sup>st</sup> to 3 <sup>rd</sup>

### Byte

Open Division	1 <sup>st</sup> to 10 <sup>th</sup>
Girls Division	1 <sup>st</sup> to 5 <sup>th</sup>

### Bic Techno

Bic Techno 7.8m	1 <sup>st</sup> to 3 <sup>rd</sup>
Bic Techno 6.2m	1 <sup>st</sup> to 3 <sup>rd</sup>

### Laser

Standard	1 <sup>st</sup> to 3 <sup>rd</sup>
Radial	1 <sup>st</sup> to 3 <sup>rd</sup>
4.7	1 <sup>st</sup> to 3 <sup>rd</sup>
420	1 <sup>st</sup> to 3 <sup>rd</sup>

## 16 DISCLAIMER OF LIABILITY

Competitors participate in the regatta entirely at their own risk. See rule 4, Decision to Race. The organising authority will not accept any liability for material damage or personal injury or death sustained in conjunction with or prior to, during, or after the regatta.

## 17 INSURANCE

Each participating boat shall be insured with valid and adequate third-party liability insurance.

## 18 FURTHER INFORMATION

For further information please contact

Singapore Sailing Federation  
1500 East Coast Parkway  
National Sailing Centre  
Singapore 468963

Tel: +65 6444 4555  
Fax: +65 6448 0485  
Email: [info@singaporesailing.org.sg](mailto:info@singaporesailing.org.sg)  
Website: [www.sailing.org.sg](http://www.sailing.org.sg)

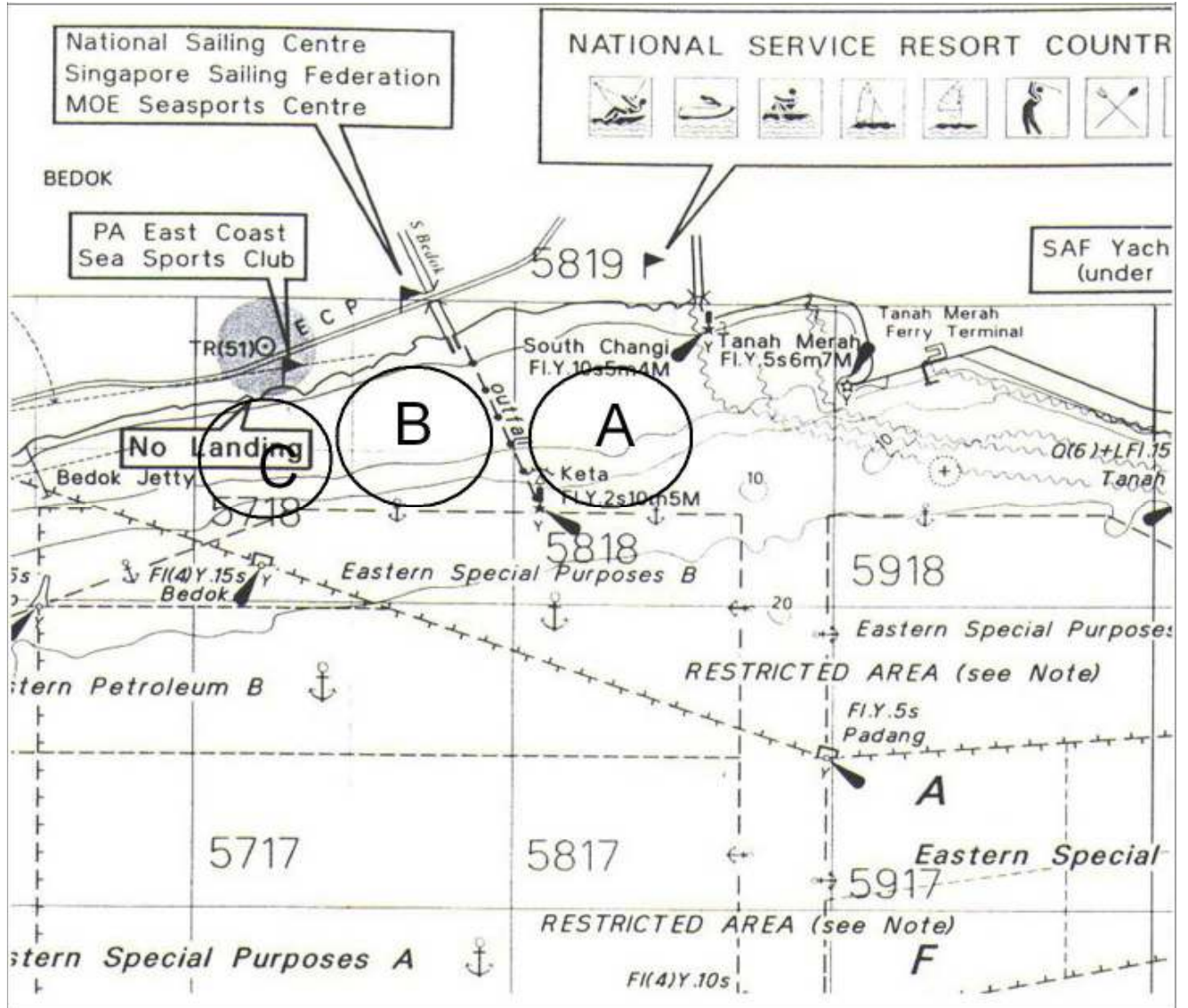
**ATTACHMENT 1**

**RACING AREAS**

**Course Area Alpha (Byte)**

**Course Area Bravo (Optimist)**

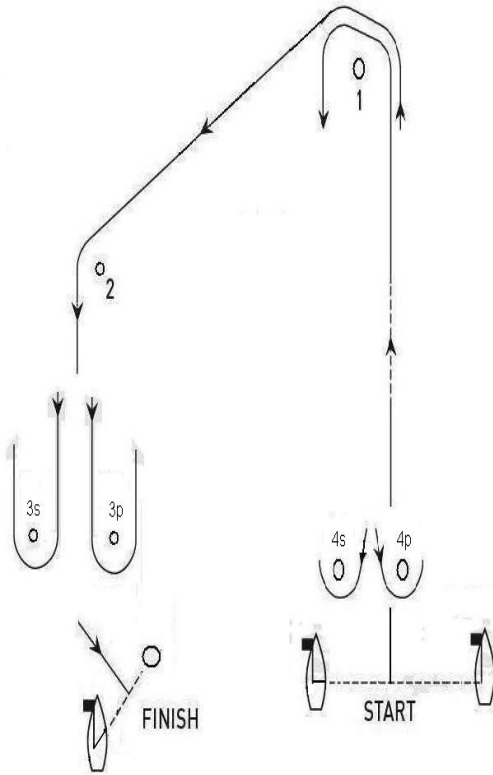
**Course Area Charlie (420, Windsurfing & Laser)**



## ATTACHMENT 2 - RACE COURSE

### ALPHA COURSE – Byte

#### Trapezoid



#### Course: Inner Trapezoid

"I2" Start – 1 – 4s/4p – 1 – 2 – 3s/3p – Finish

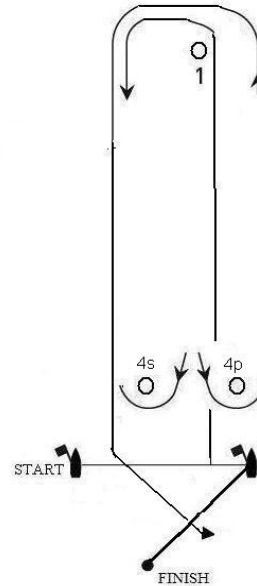
"I3" Start – 1 – 4s/4p – 1 – 4s/sp – 1 –  
2 – 3s/3p – Finish

#### Course: Outer Trapezoid

"O2" Start – 1 – 2 – 3s/3p – 2 – 3s/3p – Finish

"O3" Start – 1 – 2 – 3s/3p – 2 – 3s/3p – 2 – 3s/3p – Finish

#### Windward / Leeward



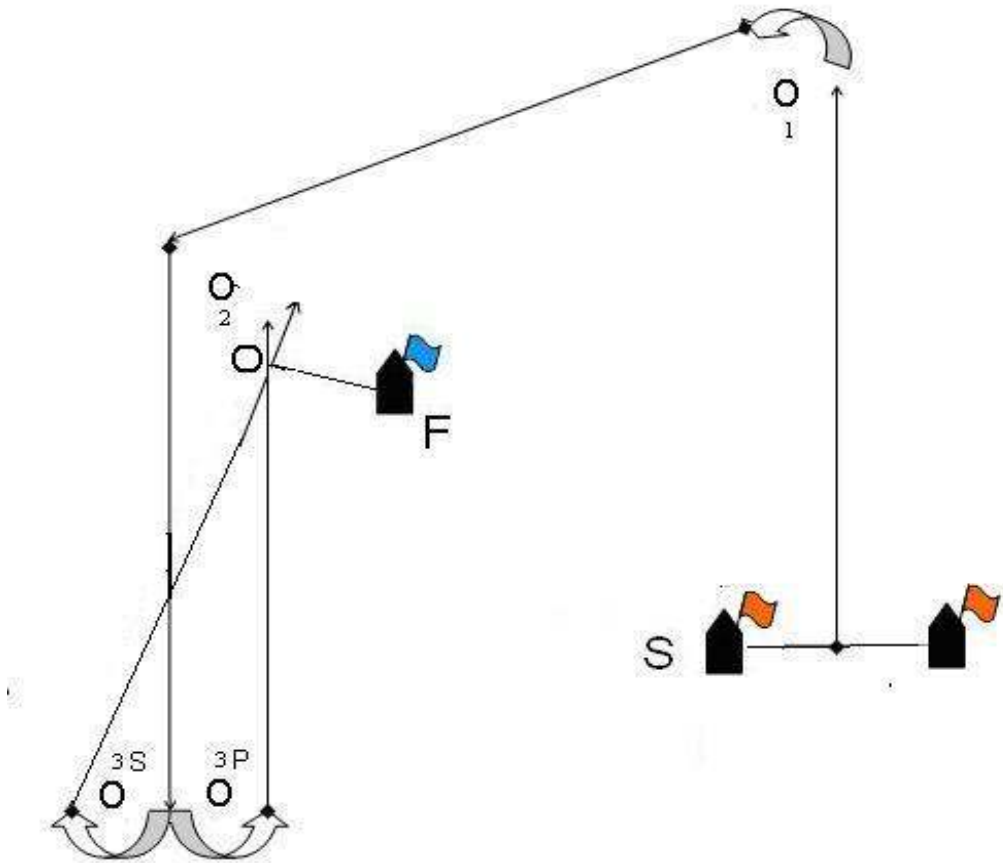
#### Course: Windward/Leeward

"L2" Start – 1 – 4s/4p – 1 – Finish

"L3" Start – 1 – 4s/4p – 1 – 4s/4p  
– 1 – 4s/4p – Finish

**BRAVO COURSE – Optimist**

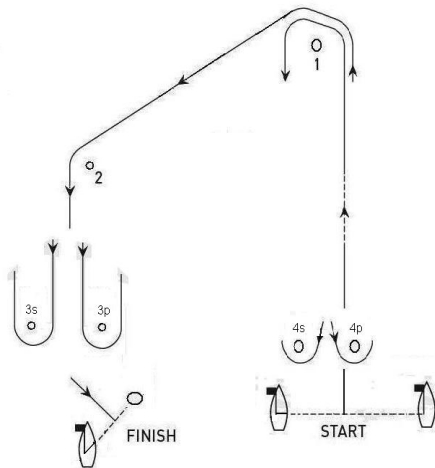
**IODA Format (Start – 1 – 2 – 3s/3p – Finish)**



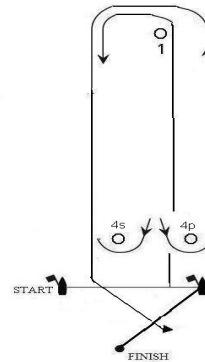


**CHARLIE COURSE – 420, Laser Std, Radial, 4.7 and Windsurfing**

**Trapezoid**



**Windward / Leeward**



**Course: Inner Trapezoid**

"I2" Start – 1 – 4s/4p – 1 – 2 – 3 – Finish

"I3" Start – 1 – 4s/4p – 1 – 4s/4p – 1  
– 2 – 3 – Finish

**Course: Windward/Leeward**

"L2" Start – 1 – 4s/4p – 1 - Finish

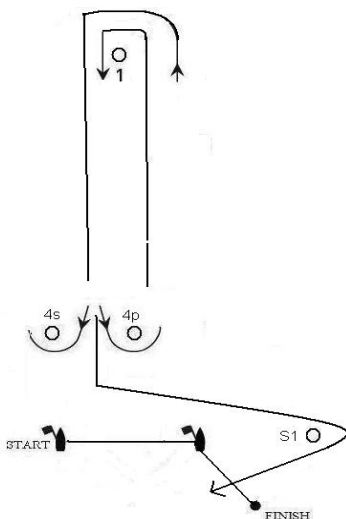
"L3" Start – 1 – 4s/4p – 1 – 4s/4p  
- 1 – 4s/4p – Finish

**Course: Outer Trapezoid**

"O2" Start – 1 – 2 – 3s/3p – 2 – 3s/3p – Finish

"O3" Start – 1 – 2 – 3s/3p – 2 – 3s/3p – 2 – 3s/3p – Finish

**Windsurfing class only**



**Windsurfing courses:**

**Course "W1"**

Start – 1(port) – S1 (port) – S2 (starboard) –  
Finish

**Course "W2"**

Start – 1(port) – S1(port) – 1(port) – S1(port)  
– 2 – (starboard) – Finish

## ATTACHMENT 3 – BOAT CHARTER

### A. OPTIMIST

**- Used Optimist boat**

Charter rates: SGD 16.05 per boat per day + Damage deposit of SGD 100

*Charter boat/s complete with blocks, airbags, spars, foils and towline. Please bring your own mainsheet, sails, sail ties, bailers and paddles.*

### B. BYTE (Standard)

**- Used Byte boat**

Charter rates: SGD 32.10 per boat per day + Damage deposit of SGD 100

*Charter boat complete with spars and foils only. Please bring your own control lines, mainsheet and sails.*

### C. LASER

**- Used Laser boat**

Charter rates: SGD 32.10 per boat per day + Damage deposit of SGD 100

Pre-regatta boat charter at SGD42.80 per day

*Charter boat complete with standard or radial rig. Please bring your own control lines, mainsheet and sails.*

### D. 420

**- Used 420 boat**

Charter rates: SGD42.80 per boat per day + Damage deposit of SGD 100

Pre-regatta boat charter at SGD53.50 per boat per day

*Charter boat complete with full rig. Please bring your own sail.*

### E. COACH BOAT

**- Coachboat**

3.4m powerboat

Charter rates: SGD 53.50 per boat per day + Damage deposit of SGD 100

(excluding petrol)

Proof of powerboat driving license are required.

**Singapore National Youth Championship**  
13th – 17th March 2012

**BOAT CHARTER FORM FOR OVERSEAS PARTICIPANTS**

Name of Designated Contact Person: \_\_\_\_\_

Email address: \_\_\_\_\_

**Boat Charter**

Type of Boat	No. of Boats	No. of Days	Requested Date (from)	Charter Rates Per Boat Per Day	Amount
Used Optimist				SGD 16.05	
Used Byte				SGD 32.10	
Used Laser Standard, Laser Radial, Laser 4.7				SGD 32.10 (Regatta) / SGD 42.80 (pre-Regatta)	
420				SGD 42.80 (Regatta)/ SGD 53.50 (pre-Regatta)	
3.4m Coachboat (Excl. Petrol)				SGD 53.50	
<b>Total (SGD)</b>					

**Damage Deposit – To be refunded if no damage occurs (In SGD Cash only)**

Type of Boat	No. of Boats	Damage Deposit Per Boat	Amount
Optimist		SGD 100	
Byte		SGD 100	
Laser Standard, Laser Radial, Laser 4.7 and 420		SGD 100	
3.4m Coachboat (Excl. Petrol)		SGD 100	
<b>Total Deposit</b>			



**Singapore National Youth Championship  
13th – 17th Mar 2012, National Sailing Centre**

**Entry Form**

Attn: Singapore Sailing Federation  
1500 East Coast Parkway  
National Sailing Centre  
Singapore 468963

Tel: +65 6444 4555  
Website: [www.sailing.org.sg](http://www.sailing.org.sg)

Helm's Name: \_\_\_\_\_  
(Enter full name)

NRIC: \_\_\_\_\_

Class of Boat: \_\_\_\_\_

Sail No: \_\_\_\_\_

If Optimist pls. indicate **Gold Fleet**

**Silver Fleet**

School: \_\_\_\_\_

Club: \_\_\_\_\_

Home Addr: \_\_\_\_\_

Date of Birth: \_\_\_\_\_

Email: \_\_\_\_\_

Sex: \_\_\_\_\_

Crew's Name: \_\_\_\_\_

Tel No: \_\_\_\_\_

Mobile: \_\_\_\_\_

**Entry Fees**

The entry fees (inclusive of GST) will be non-refundable:

<u>Classes</u>	<u>Early bird before 29 Feb</u>	<u>By 29 Feb</u>
Single handed class	\$74.90	\$112.35
Double handed class	\$149.48	\$224.70 (per boat)

Enclosed is S\$\_\_\_\_\_ being payment for the entry fee.

**Declaration by competitor**

I/We agree to be bound by the Racing Rules of Sailing.

I/We acknowledge and accept the risks associated with participation in the regatta and waive all rights against and release the Organising Authority in respect of any loss of life and injury to persons, or loss of or damage to property, suffered in connection therewith; and acknowledge that participation in the regatta is entirely at my/our own risk and responsibility.

\_\_\_\_\_  
Helm's  
Signature

\_\_\_\_\_  
Parent's Signature  
(Required for sailors  
21 years & below)

\_\_\_\_\_  
Crew's Signature

\_\_\_\_\_  
Parent's Signature  
(Required for sailors  
21 years & below)

**There will be no refund of regatta entry fees. Refund will only be given if the regatta is cancelled.**