



**2013 NZ 420 Class National Championships**  
and  
**2013 420 World Championship Selection Trials**

Fri 29<sup>th</sup> March to Monday 1<sup>st</sup> April 2013

Takapuna Boating Club

The Organising Authority is the Takapuna Boating Club, (TBC),  
in association with the NZ 420 Association

---

**NOTICE OF RACE**

---

**1 RULES**

- 1.1 The regatta will be governed by the rules as defined in *The Racing Rules of Sailing*.
- 1.2 The Yachting New Zealand Safety Regulations Part 1 shall apply. Refer;  
<http://www.yachtingnz.org.nz/racing/safety-regulations>
- 1.3 Racing rule 42 *Propulsion* will be changed to allow boats to pump, rock and ooch as permitted by rule C.1.2 of the 420 Class Rules. The changes will appear in full in the sailing instructions. The sailing instructions may also change other racing rules.
- 1.4 For protests where only a Rule of Part 2, or Rule 31 is alleged to have been broken an arbitration hearing will be offered prior to any formal hearing.

**2 ADVERTISING**

Boats may be required to display advertising chosen and supplied by the organizing authority.

### **3 ELIGIBILITY AND ENTRY**

- 3.1 The regatta is open to boats of the International 420 Class.
- 3.2 Eligible boats may enter by completing the attached Entry Form and either;
- i. sending it together with the required fee, to  
The Manager,  
Takapuna Boating Club,  
PO Box 33 062,  
Takapuna,  
Auckland 0740, or
  - ii. emailing it to  
[sailing@takapunaboating.org.nz](mailto:sailing@takapunaboating.org.nz)  
and depositing the required entry fee into the TBC bank  
account number 12 3109 0044465 02.  
Reference the payment with "420 Nats" and your sail  
number,
- by 1700 hours on Friday, 22<sup>nd</sup> March, 2013.
- 3.3 Late entries may be accepted up until 1000hrs on Friday 29<sup>th</sup> March 2013, with payment of the prescribed late entry fee, at the discretion of the Organising Authority.
- 3.4 To be eligible to compete in this event each competitor (helmsperson and crew) shall be a financial member of a club recognised by the competitor's national authority.
- 3.5 Each competitor (helmsperson and crew) shall be a current financial member of the NZ 420 Class Association.
- 3.6 The following documents must accompany the Entry Form;
- i. proof of yacht club membership,
  - ii. proof of NZ 420 Class Association membership,
  - iii. measurement certificate for boat being entered.

### **4 CLASSIFICATION**

There are no classification requirements in accordance with RRS 79.

## 5 FEES

- 5.1 The required entry fee is \$200.
- 5.2 Late entry fee is \$250 (Entry fee \$200 + Late fee \$50):

## 7 SCHEDULE

### 7.1 *Registration:*

Thursday 28<sup>th</sup> March, 2013

From 1600 to 1800, and

Friday, 29<sup>th</sup> March, 2013

From 0800 to 1000, at the Takapuna Boating Club.

### 7.2 *Safety inspection:*

Friday, 29<sup>th</sup> March, 2013

From 0800 to 1000.

### 7.3 *Briefing:*

Friday, 29<sup>th</sup> March, 2013

At 1000.

### 7.4 *Dates of racing:*

The event shall consist of a series of up to 12 races – (refer schedule below).

Day	Date	Time of First Warning Signal	Number of Races
Day 1	Fri 29 <sup>th</sup> March	1200	3
Day 2	Sat 30 <sup>th</sup> March	1100	3
Day 3	Sun 31 <sup>st</sup> March	1100	3
Day 4	Mon 1 <sup>st</sup> April	1100	3

### 7.5 Races may be sailed back-to-back.

### 7.6 On Monday 1<sup>st</sup> April, 2013 no warning signal will be made after 1500 hours.

## **8 MEASUREMENTS**

Each boat shall produce a valid measurement certificate at registration. In addition, spot measurement and safety checks may be conducted at any time throughout the regatta.

## **9 SAILING INSTRUCTIONS**

The sailing instructions will be available at registration on Friday 29<sup>th</sup> March, 2013 at Takapuna Boating Club.

## **10 VENUE**

10.1 Appendix A shows the location of the regatta venue.

10.2 Appendix B shows the approximate location of the racing area.

## **11 THE COURSES**

The courses to be sailed will be Windward/Leeward and/or Trapezoid.

## **12 PENALTY SYSTEM**

Appendix P may apply.

## **13 SCORING**

13.1 5 races are required to be completed to constitute a series.

13.2 (a) When fewer than 6 races have been completed, a boat's series score will be the total of her race scores.

(b) When 6 or more races have been completed, a boat's series score will be the total of her race scores excluding her worst score.

## **14 SUPPORT BOATS**

14.1 All support boats must register with the Organising Authority at registration and nominate the boat(s) they support.

14.2 Team leaders, coaches, and other support personnel shall comply with NOR 15.

## **15 PROHIBITED ANCHORING AREA**

- 15.1 Boats associated with the championship and registered support boats shall comply with the New Zealand Government Regulation “Submarine Cables and Pipelines Protection Act 1996”. This regulation prohibits anchoring in the area shaded in the No Anchoring area in Appendix 2 and defined on charts NZ532 and NZ5322.
- 15.2 Any boat or support craft breaking NOR 15.1 will be subject to a hearing resulting in a report to their National Authority and ISAF. As a consequence, a competitor associated with the coach of the support craft may be disqualified from the race closest to the time of the infringement.

## **16 LAUNCHING AND STORAGE**

- 16.1 Unless otherwise directed by the Organising Authority, all competing boats and equipment shall be launched and retrieved from Takapuna Beach near the Takapuna Boating Club clubhouse.
- 16.2 Boats may be kept on the reserve adjacent to the Takapuna Boating Club.

## **17 RADIO COMMUNICATION**

Except in an emergency, a boat shall neither make radio transmissions while racing nor receive radio communications not available to all boats. This restriction also applies to mobile telephones.

## **18 PRIZES**

Prizes will be given as follows:

- a trophy for the overall winning team,
- a trophy for the first female team,
- Other prizes may be given at the discretion of the Organising Authority or 420 Class Association

## 19 **DISCLAIMER OF LIABILITY**

Competitors participate in the regatta entirely at their own risk. See rule 4, Decision to Race. The organizing authority will not accept any liability for material damage or personal injury or death sustained in conjunction with or prior to, during, or after the regatta.

## 20 **INSURANCE**

Each participating boat shall be insured with valid third-party liability insurance with a minimum cover of \$500k NZD per incident or the equivalent.

## 21 **FURTHER INFORMATION**

For further information please contact;

Dave West

Takapuna Boating Club  
The Strand  
Takapuna  
Auckland

Takapuna Boating Club  
PO Box 33062  
Takapuna  
Auckland 0740

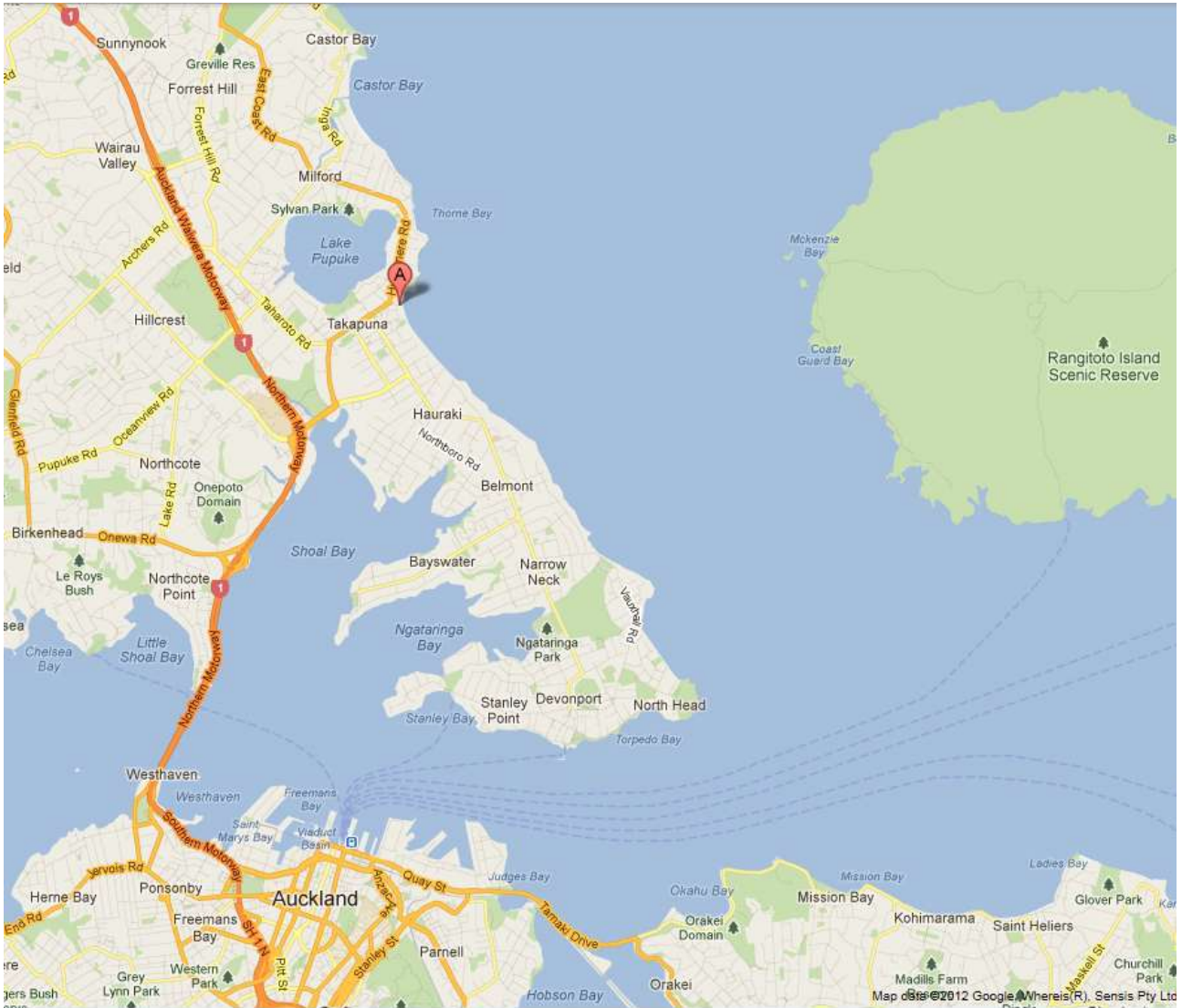
Phone: +64 9 489 6941  
Fax: +64 9 486 0747

email: [sailing@takapunaboating.org.nz](mailto:sailing@takapunaboating.org.nz)

web-site: <http://www.takapunaboating.org.nz>

## APPENDIX A

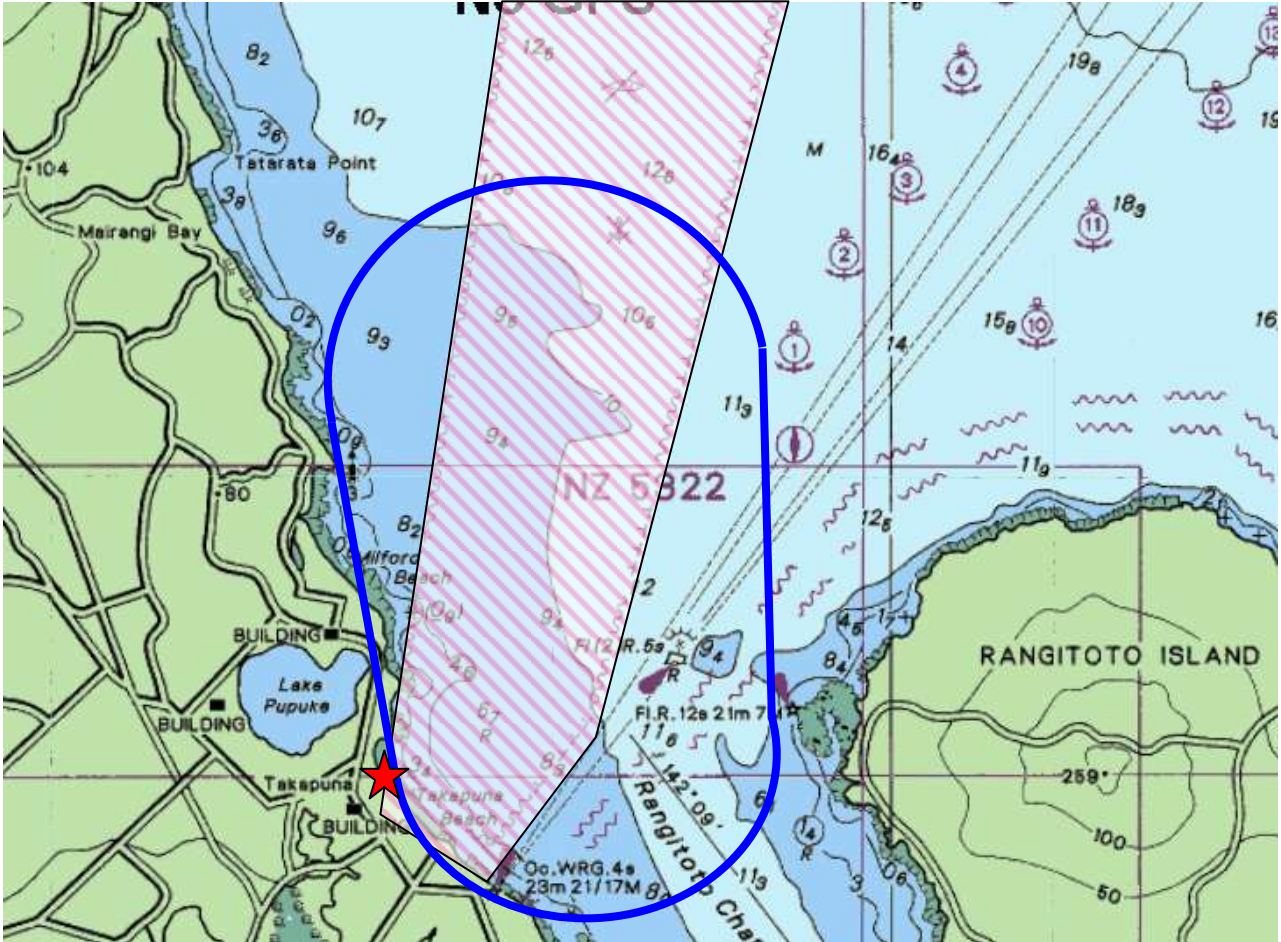
### LOCATION OF TAKAPUNA BOATING CLUB





**A** Takapuna Boating Club location


## APPENDIX B

### APPROXIMATE LOCATION OF THE RACING AREA



 Takapuna Boating Club location

 Approximate course area

 Prohibited anchoring area