



MYANMAR NATIONAL OPEN SAILING CHAMPIONSHIP
Ngwe Saung, Myanmar
4 ~ 8 April 2013

NOTICE OF RACE *with Amendments*

1. ORGANIZING AUTHORITY

This Championship will be organized by the Myanmar Yachting Federation (MYF) with the support of Myanmar Olympic Committee.

2. LANGUAGE

English shall be the official language for the championship.

3. RULES

This Championship will be governed by the rules as defined in *the Racing Rules of Sailing (2013-2016)*.

The following rules, regulations and instructions will apply:

1. Notice of Race
2. The Rules of Respective Classes
3. Sailing Instructions
4. Supplementary Sailing Instructions
5. No National Authority prescriptions will apply

4. EVENTS

This championship will be contested in the following events:

1. Optimist Overall (Must be born in 1998 or later)
2. Int'l 420 (Open) (Must be born in 1994 or later)
3. RSOOne (Division A) (Must be born in 1998 or later)
4. RSOOne (Division B) (Must be born in 1995 or later)
5. RSOOne (Open)
6. Half Rater (Open)
7. Laser Standard
8. Laser Radial

5. ENTRIES

Entries shall be made using official entry forms according to following schedule:

1. Preliminary Entry Form must be received by 15th February 2013.
2. The Final Entry Form must be received by the Organizing Committee before 8th March 2013.
3. Late entries will be accepted at the discretion of the Organizing Authority.
4. There is limited number of entries available for each class (due to lack of charter boats) where entries will be accepted and registered on a first come first serve basis.
5. For the Int'l 420 Class, 6 charter boats are available where each participating nation will be limited to 2 entries unless there is not enough entries.
6. For Rater Class, 3 charter boats are available where each participating nation will be limited to 1 entry unless there is not enough entries.
7. For Laser Standard and Laser Radial Classes, 3 charter boats are available for each respective class.

All entries are to be sent by Fax or E-mail to the following address:

Myanmar Yachting Federation
 84-85, Hlaing Myint Moh Lane # 1
 10th Quarter, Hlaing Township,
 Yangon, Myanmar
 Tel : (95-1) 516 201, 507 100, 521 003
 Fax : (95-1) 501 501
 Email : info@myanmarsailing.com, sailingteam.myf@gmail.com
 Web : www.myanmarsailing.com

6. ENTRY FEES

1. Entry fees will be USD100 per head for both sailors and officials. Lunch will be provided on racing days to all participants and officials.
2. Entry fees will be payable (in United States Dollars and in cash only) at the time of registration.

7. SCHEDULE

1. Schedule

DAY	HOURS	SCHEDULE
4 April 2013 (Thursday)	0900 - 1900	Official Arrival and Registration
5 April 2013 (Friday)	1000 1100 1800	Skipper's Briefing Racing Day Opening Ceremony (Dinner)
6 April 2013 (Saturday)	1100	Racing Day
7 April 2013 (Sunday)	1100	Racing Day
8 April 2013 (Monday)	1100 1530 1900	Racing Day Last possible warning signal Prize Giving Ceremony (Dinner)

2. The first possible warning signal will be made each day at 1100 hrs, except the last day when the warning signal can be displayed at 1000 hrs.
3. A total of twelve (12) races are scheduled.

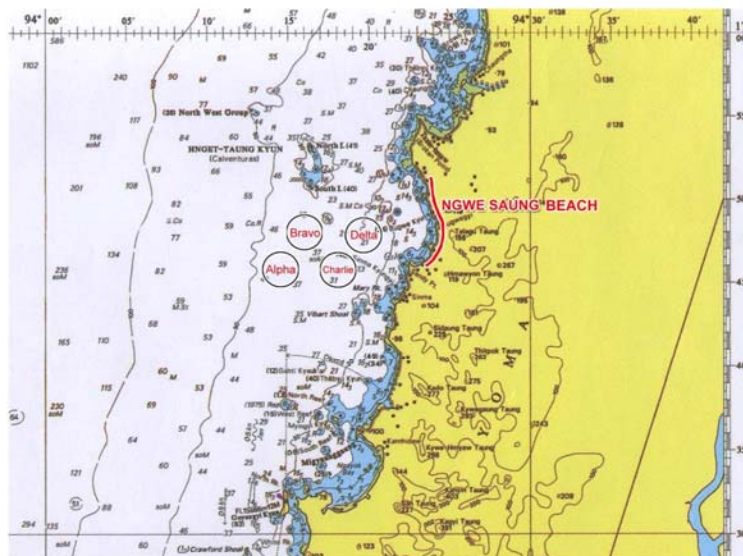
8. SAILING INSTRUCTIONS

Sailing Instructions and Supplementary Sailing Instructions will be available during registration at the Race Secretariat.

9. VENUE

1. The sailing competition will be held at the Ngwe Saung Yacht Club, Ngwe Saung beach, Ayerwaddy Division, Myanmar.
2. Ngwe Saung beach is approximately five hours drive from the Yangon International Airport.
3. The racing area is approximately 15 minutes sailing time from the launch area.

Venue Map



10. COURSES

The courses to be sailed will be detailed in the Sailing Instructions and the Supplementary Sailing Instructions.

11. SCORING

1. Low Point System of Appendix A will apply.
2. When fewer than seven races have been completed, a boat's series score will be the total of her race scores.
3. When from seven races have been completed, a boat's series score will be the total of her race scores excluding her worst score.
4. When ten races have been completed, a boat's series score will be the total of her race scores excluding her two worst scores.

12. PROTEST COMMITTEE

A Protest Committee will be appointed by the Organizing Authority. Decision of the Protest Committee is final.

13. SUPPORT BOATS

Limited Coach boats can be made available on charter (on a first come first serve basis with additional fuel cost) provided the Organizing Committee receives the request on or before submission of final entries.

14. RADIO COMMUNICATION

A boat shall neither make radio transmissions nor receive radio communications while racing. This restriction also applies to mobile telephones.

15. CHARTER FEES

A charter fees has been decided as under:

Class	Charter Fee	Damage Deposit (Refundable)
Optimist	\$100	\$ 100
Int'l 420	\$ 200	\$ 200
RS:One	\$ 250	\$ 300
Half Rater	\$ 300	\$ 500
Laser	\$ 150	\$ 200

Boats will be provided with spars & foils. Competitors must bring their own SAILS except for the Half Rater Class and RS:One Class. Laser sailors must bring their own tiller extension, ropes, and sails.

16. SAILING CONDITIONS

Average day time temperature: 27 - 33°C
Average sea surface temperature: 29°C
Average prevailing wind strength: 8-10 knots

17. PRIZES AND COMMENDATION

The following prizes will be awarded for each class:

Optimist Overall	1 to 5
Optimist Girls	1 to 3
Int'l 420 Overall	1 to 3
RSONe(Under 16)	1 to 3
RSONe(Under 19)	1 to 3
RSONe Overall	1 to 3
Half Rater	1 to 3
Laser Standard	1 to 3
Laser Radial	1 to 3

If there are less than 4 entries in a Class a bronze medal shall not be awarded.

18. ACCOMMODATION AND TRANSPORTATION

Participants have the option of arranging their own accommodation directly with the hotel owners. Suggested places of accommodation are detailed below for your convenience.

Accommodation Information:

Ngwe Saung Yacht Club

Tel : (95-1) 516 201, 507 100, 521 003
Fax : (95-1) 501 501
Email : info@myanmarsailing.com, sailingteam.myf@gmail.com

Limited rooms available

Central Beach Resort Hotel (1 km from Ngwe Saung Yacht Club)

Tel : (95-1) 241 001, 241 002 ~ 020
Web : www.centralngwesaung.com
Email : centralhotelsales@gmail.com

YamonnarOo Hotel (1.6 km from Ngwe Saung Yacht Club)

Tel : (95-1) 530 722
Web : www.myanmarlist.com
Email : yamonnaroons@gmail.com

Silver View Hotel (2 km from Ngwe Saung Yacht Club)

Tel : (95-1) 502 681, 502 682
Web : www.myanmarbeachsilverview.com
Email : silverviewresort@gmail.com

Transportation Information :

A bus charter will be departing at the following schedules:

Yangon International Airport to Ngwe Saung Beach

First Trip – 3rd April at ETD 13:00 hrs ~ ETA 18:30 hrs

Second Trip – 4th April at ETD 10:30hrs ~ ETA 15:30 hrs

Ngwe Saung Beach to Yangon International Airport

First Trip – 9th April at ETD 0400 hrs (ETA 0930 hrs)

Second Trip – 9th April at ETD 0900 hrs (ETA 1430 hrs)

*****Bus Charter fees are 70 USD per person for round trip.*****

Booking for accommodation and transportation can all be arranged by *Myint & Associates Company Ltd.* at an additional service charge of 10%. Contact Information to use this company is:

Mr. Thaik Soe

Tel : (95-1) 516 201, 507 100, 521 003
Mob : (95-9) 4316 0394
Email : thaiksoe30@gmail.com, zero5689@gmail.com,
ayechanthu126@gmail.com

19. VISA INFORMATION

It is **highly recommended** that visas be obtained with the Myanmar Embassy in your respective countries prior to arrival to avoid delays and complications at the airport. The process may take several days depending on the country. Using a travel agent is also recommended to expedite the process.

On Arrival Visa

Regarding with Visa On Arrival information, pls. visit Government's official website :-
<http://www.mip.gov.mm/visaonarrival/> .

The Application Form can be downloaded from the website in advance, however, the immigration officers are used to provide the same form and ask to complete again at Airport. After filling up the Application Form, it is required to provide invitation letter together with 2 recent (4cm x 6cm) color photos, by paying US\$ 40 for single entry visa fee. (On arrival visa process may take up to 30-45 minutes per person)

MYF will provide a "Letter Act as Guarantee" (LAG) upon your request to obtain visas.

20. ENTRY DISCLAIMER

Participants compete entirely at their own risk and responsibility (see RRS 4). The Organizing Authority and any party involved in the organization of the event accept no liability whatsoever

for any injury, damage loss or claim, whether personal or material, incurred by or inflicted to participants before, during or after the event.

21. CONTACT POINT

For further information please contact:

Myanmar Yachting Federation
84-85, Hlaing Myint Moh Lane # 1
10th Quarter, Hlaing Township,
Yangon, Myanmar

Tel : (95-1) 516 201, 507 100, 521 003

Fax : (95-1) 501 501

Email : info@myanmarsailing.com, sailingteam.myf@gmail.com

Web : www.myanmarsailing.com