

# SANDRINGHAM YACHT CLUB



## **NOTICE OF RACE**

**12 - 13 October 2019**

The Organising Authority for this regatta is the Sandringham Yacht Club Inc. Sandringham Yacht Club (SYC) invites entries for the **2019 SAIL SANDY REGATTA** to be conducted on Saturday 12 and Sunday 13 October 2019.

**1. RULES**

- 1.1 The Regatta will be governed by the rules as defined in the *Racing Rules of Sailing (RRS)*, the Prescriptions and Special Regulations of Australian Sailing (AS) and the Sailing Instructions.
- 1.2 AS Addendum A, Part 2 will apply.
- 1.3 Appendix T Arbitration will apply.
- 1.4 Australian Sailing have been asked to agree that Decisions of the National Jury will be final as provided in RRS 70.5.

**2. ADVERTISING**

- 2.1 Competitors may be required to display advertising chosen and supplied by the organising authority.

**3. ELIGIBILITY AND ENTRY**

- 3.1 The regatta is open to all:  
Monohull and Catamaran Off The Beach boats with a listed YV yardstick, J24's and Kite Foil boards (incorporating the Foiling Kite State Championships).  
Green Fleet entries for all junior classes including the Tackers Ozi Opti will be accepted.  
All boats shall comply with their current class rules with the exception of Green Fleet.
- 3.2 Helmspersons and their crew shall be members of an AS affiliated Yacht Club and have a current Australian Sailing membership.
- 3.3 Eligible boats shall enter online via the event web page: [www.syc.com.au/sail-sandy](http://www.syc.com.au/sail-sandy)
- 3.4 Entries will not be accepted after 1100hrs on Saturday 12 October.
- 3.5 The organising authority may cancel or make other arrangements for a class or division if the minimum number of 6 (six) entries has not been received by midnight (local time), 10 October 2019. Competitors will be notified of the cancellation by email and posting on the event website. The entry fees will be refunded in full.

**4. FEES**

- 4.1 Required fees are as follows:  
Early bird registration Fee: (If registered prior to 2400hrs 4 October)
  - Single handed class: \$60.00
  - Double handed classes/J24: \$85.00

SYC Youth Members early bird entry fee:

- Single handed class: \$45.00
- Double handed class: \$70.00

Green fleet early bird entry fee: \$50 (includes on-water coaching)

Late Entry Fee:

- Single handed class: \$95.00
- Double handed classes/J24: \$120.00

**5. SCHEDULE OF EVENTS**

- 5.1 Registration  
Registration will take place in the SYC Training Auditorium (access via undercroft at the north/west corner of the building) on Saturday 12 October from 0800hrs until 1100hrs.

At registration all non SYC members will be issued with an Honorary Membership of SYC for the duration of the regatta. Honorary Membership will be issued on the basis that competitors,

family members and officials respect the rules and regulations of SYC Honorary Membership. This privilege may be revoked at any time.

Competitors, family members and officials are to present themselves to the Registration Office on arrival to be issued with their Honorary Membership pass.

## 5.2 Schedule

There are 8 races scheduled for this event

<b>Schedule</b>	<b>Day and Date</b>	<b>Time</b>
Registration	Saturday 12 October	0800hrs – 1100hrs
Competitors Information Session		1000hrs
Coach/Support Boat Information Session		1030hrs
<b>Races</b>	<b>Day and Date</b>	<b>Time of Warning Signal</b>
1 <sup>st</sup> warning signal	Saturday 12 October	1200hrs
1 <sup>st</sup> warning signal	Sunday 13 October	1000hrs

Note: on the last day of scheduled racing, there will be no warning signal after 1500hrs. There are no resails.

## 6. MEASUREMENT

- 6.1 Each boat shall conform to class rules (except Green Fleet).
- 6.2 Substitution of damaged or lost equipment will not be allowed unless authorised by the race committee. Requests for substitution shall be made to the race committee at the first reasonable opportunity. All sail numbers shall only be that of the registered boat sail number.

## 7. SAILING INSTRUCTIONS

- 7.1 Sailing Instructions will be available at [www.syc.com.au/sail-sandy/](http://www.syc.com.au/sail-sandy/) by Monday 7 October. Copies will not be provided at registration. Amendments will be posted on the SYC web site [www.syc.com.au/sail-sandy/](http://www.syc.com.au/sail-sandy/) and on the Official Notice Board.

## 8. VENUE

- 8.1 Attachment A shows the location of the regatta precinct.
- 8.2 Attachment B shows the location of the racing areas.

## 9. THE COURSES

- 9.1 Trapezoid, triangular and windward leeward type courses as described in the Sailing Instructions will be sailed.

## 10. PENALTY SYSTEM

- 10.1 The penalty system will be as detailed in the Sailing Instructions.

## 11. SCORING

- 11.1 The Low Point Scoring System in Appendix A will apply.
- 11.2 Where there are 10 or more entries for a particular class, this class may be raced in its own division. Divisional splits will be determined by the Organising Authority.
- 11.3 Three (3) races are required to be completed to constitute a series.
- 11.4 When fewer than six (6) races have been completed, a boat's series score will be the total of her race scores.
- 11.5 When six (6) or more races have been completed, a boat's series score will be the total of her race scores excluding her worst score.

## 12. SUPPORT BOATS

- 12.1 Coach/support Boats shall conspicuously display identification of the team being coached.
- 12.2 The Organising Authority will provide berths for visiting coach/support boats under 6m on request by completion of the form available at [www.syc.com.au/sail-sandy/](http://www.syc.com.au/sail-sandy/).

- 12.3 Unless directed by the Race Management Team and or Jury, or to render immediate assistance in the interests of safety, team leaders, coaches and other support personnel shall not enter the course area where boats are racing, as defined in the Sailing Instructions, and shall stay more than 50 metres clear of any mark of the course from the time of the preparatory signal for the first division to start until all boats have finished or the race committee signals a postponement, general recall or abandonment.
- 12.4 Any interference by a coach or coach/support boat with the racing or event organization may result in a penalty applied at the discretion of the Jury to the appropriate skipper or team.
- 12.5 All coach/support boats shall comply with the SYC Special Notice of Requirements for Coach/Support Boats and complete the Coach Boat Agreement form – Attachment C.
- 12.6 All support personnel will comply with the AS “Coach’s Code of Conduct”.

### **13. PRIZES**

13.1 Trophies may be awarded to:

- a) Cash prizes (for classes with 10 or more entries) for 1<sup>st</sup> – 3<sup>rd</sup> place.
- b) Divisional on yardstick for 1<sup>st</sup> – 3<sup>rd</sup> place.
- c) Overall regatta winners for 1<sup>st</sup> – 3<sup>rd</sup> place.

13.2 Other trophies may be awarded at the discretion of the Organising Committee.

13.3 A Presentation ceremony will be held on the northern podium or in the Port Phillip Room of the main clubhouse as soon as possible after the last race on Sunday 13 October.

### **14. SAFETY**

14.1 Officials may carry out "spot checks" from time to time. Any boat that does not fully comply with all Class rules and AS Safety Regulations may be subject to protest.

### **15. ENTRY DISCLAIMER**

15.1 Competitors participate in the regatta entirely at their own risk. See Rule 4, Decision to Race. It is the competitor’s decision to enter the Regatta or to start and continue in any race. Competitors shall accept that their participation in the Regatta is at their exclusive risk in every respect. By way of entry in the Regatta competitors shall indemnify the Organising Authority, Sail Sandy and the Host Club, their officers, members, servants and agents in respect to all claims and demands of whatever nature (such as loss of life, personal injury or loss or damage to property and all other possible claims) which may be made upon them in connection with or howsoever arising from their participation or intended participation in the Regatta.

### **16. INSURANCE**

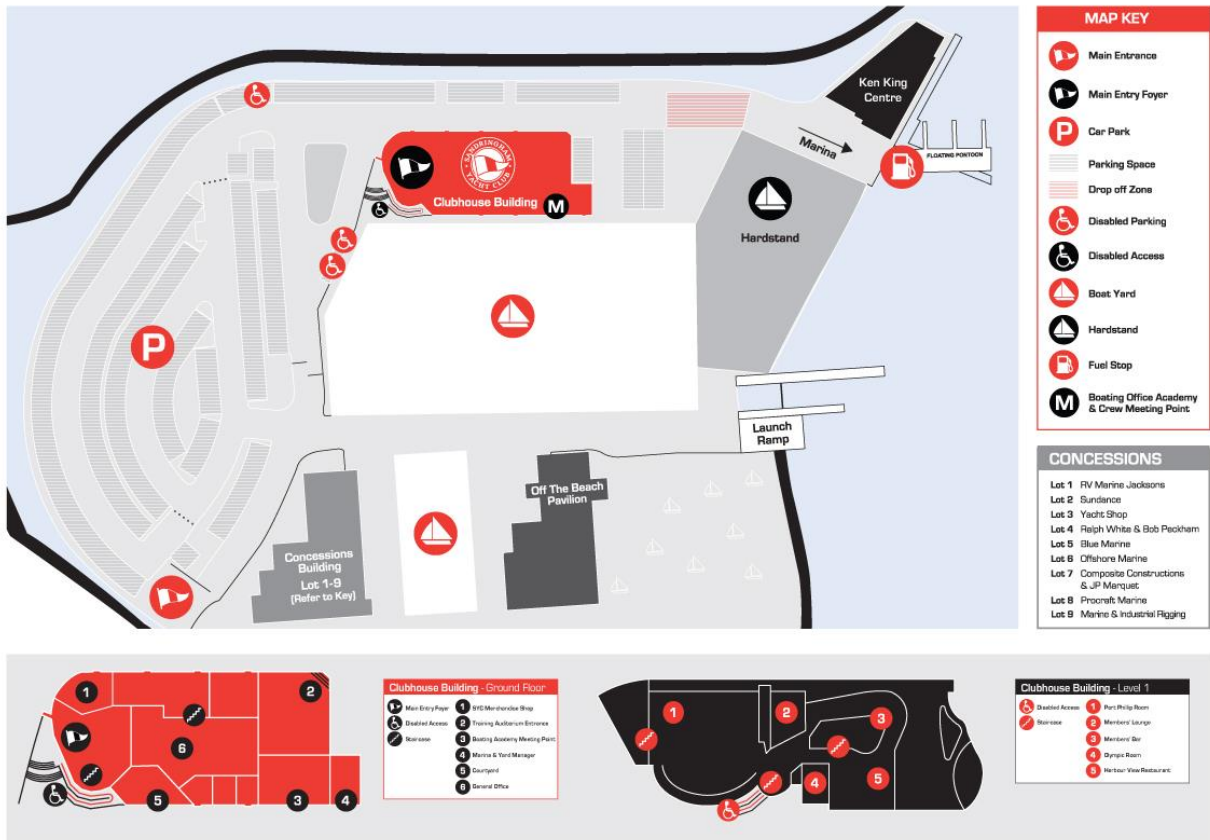
16.1 Each participating boat shall be insured with valid third party liability insurance with a minimum cover of \$5,000,000 per event or the equivalent.

### **17. FURTHER INFORMATION**

Boating Department  
Sandringham Yacht Club  
Jetty Road (PO Box 66)  
SANDRINGHAM, VIC, 3191  
Email: [boating@syc.com.au](mailto:boating@syc.com.au)  
Phone: 03 9599 0922

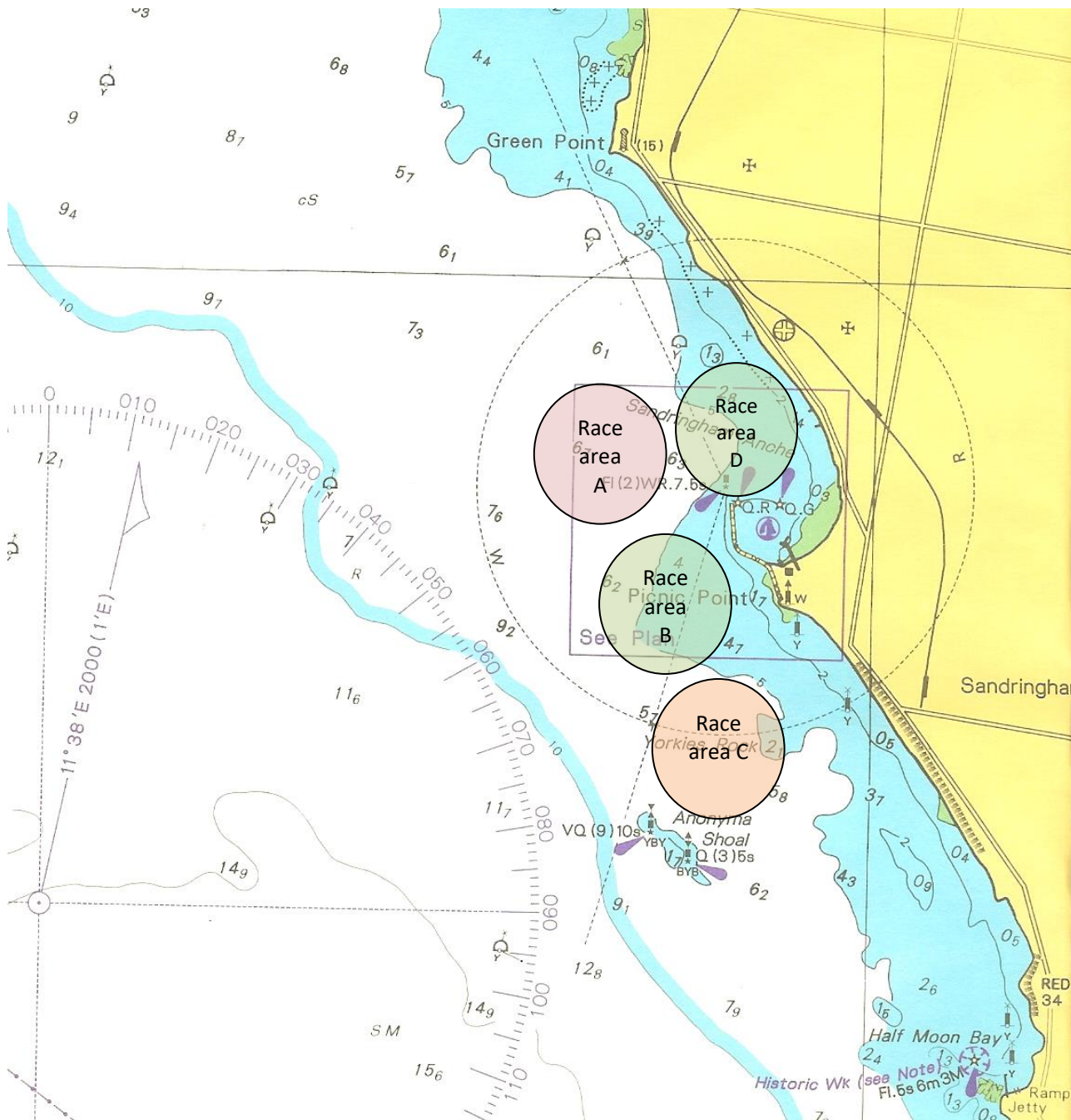
# Attachment A

## Regatta Precinct



# Attachment B

## Racing area



## ATTACHMENT C:

### **SPECIAL NOTICE OF REQUIREMENTS FOR COACH/SUPPORT BOATS**

Coach / support boats which wish to enter and use the Sandringham marina during the Regatta must comply with the following:

1. Complete the coach boat registration form available at <https://syc.com.au/sail-sandy/> before arriving at Sandringham Yacht Club – boats will not be allowed into the yard or marina until this form has been completed, checked and verified;
2. Unless directed by the Race Management Team and or Umpires, or to render immediate assistance in the interests of safety, team leaders, coaches and other support personnel shall not enter the Course Area where boats are racing, as defined in the Sailing Instructions and shall stay more than 50 metres clear of any mark of the course from the time of the preparatory signal for the first flight to start until all boats have finished or the race committee signals a postponement, general recall or abandonment;
3. When requested by the Race Management Team and or Umpires render immediate assistance as and when directed;
4. All coach boats are required to have a VHF radio, and maintain a listening watch on the channels specified by the Race Management Team.
5. All team leaders, coaches and other support personnel shall identify themselves by flying a flag of not less than 300mm x 300mm displaying the boat, club, class or state they represent.
6. All support boats are required to hold Third Party Liability Insurance of not less than \$5,000,000 and written evidence of this must be delivered to the Boating Department, Sandringham Yacht Club. Written confirmation should be obtained from your insurer that your private pleasure craft policy will cover your boat whilst being used in this capacity. Failing to comply with the insurance requirement may render the boat unable to participate or assist any boat nominated for the Regatta, and will therefore be denied access to the yard or marina;
7. The penalty for failing to comply with the above requirements may, after protest, be the disqualification of all boats associated with the infringing support personnel.

Boating Department  
Sandringham Yacht Club  
Jetty Road (PO Box 66)  
SANDRINGHAM, VIC., 3191  
PH: (03) 9599 0922  
Email: [boating@syc.com.au](mailto:boating@syc.com.au)